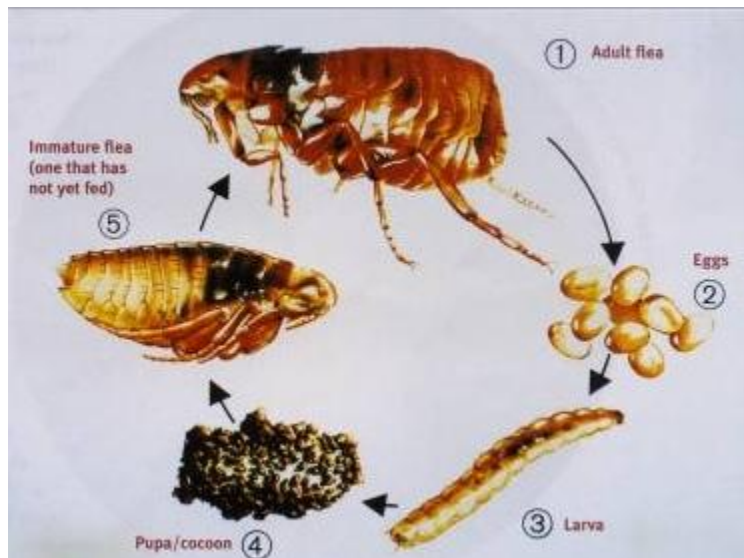


Fleas Fleas Fleas

Posted on [March 2, 2013](#) by [Graham](#)

Fleas are remarkable insects. They are extremely well adapted to their environment, and in spite of millions of dollars being spent on their demise, every summer their numbers soar again.

The adult flea, after a good feed of blood from a cat, dog or human, is then happy to go about reproducing. They lay tiny white eggs (up to 500 in their lifetime) that fall to the ground, often in a warm position where a cat or dog likes to rest. After going through a larval and pupal stage, the young adult lies in wait until they feel warmth and vibrations indicating a host is near. Their jumping skills then come into play, being able to jump 200 times their body length and hop on to their new host. Remarkable.



Another reason why fleas are hard to control is that only 5% of the total population are on animals. The other 95% are on the ground in the form of eggs, larvae, pupae or young adults.

So treatment has to be long lasting on the animal to effect any sort of control. If the environment is badly infested then it will need to be treated with flea bombs and sprays, along with all animals in the household.

We always experience a dramatic rise in the flea population during late summer and early autumn, as environmental conditions become perfect for fleas to reproduce.

For this reason we are **running a promotion for the months of March and April**, where if you buy a pack of Revolution, you get an **extra months supply free**, that is 33% extra!!!